

## DSL B-1

## Blast Resistant

### SPECIFICATIONS

Frame	16 GA. Cold-rolled steel
Door	16 GA. Cold-rolled steel; 1-3/4 inches thick ASTM A1008 / A1008M
Blast Resistance	Up to 2 psi peak blast pressure for all blast load durations
Paint	Prime Painted
Hinges	(3) 4 1/2" BB NRP Standard Weight Butt Hinges
Lock	Grade 1 Mortise Lock

### OPTIONS\*

Door Types	F, N, V, G, FG, FG2 and Pairs
Stainless Steel	Type 316L or Type 304 ASTM A240 / A240M
Galvanized Steel	ASTM A653 / A653M – A60
Vision Panel	DSM Proprietary
Fire Rated	Up to 3 hours for Flush Doors Up to 90 minutes with Vision Panel
Hinges	Stainless Steel Continuous Pin & Barrel w/ SS Bearings Heavy Duty Butt Hinges with SS Bearings
Lock	Cylindrical Lock or Mortise Lock
Stock	Multiple sizes in stock
Customizations	Size, Hardware and Features

\* Some options are mutually exclusive

### INDEPENDENT VERIFICATION AND QUALIFICATION TESTING

Architectural Testing, Inc.

Baker Engineering and Risk Consultants, Inc.



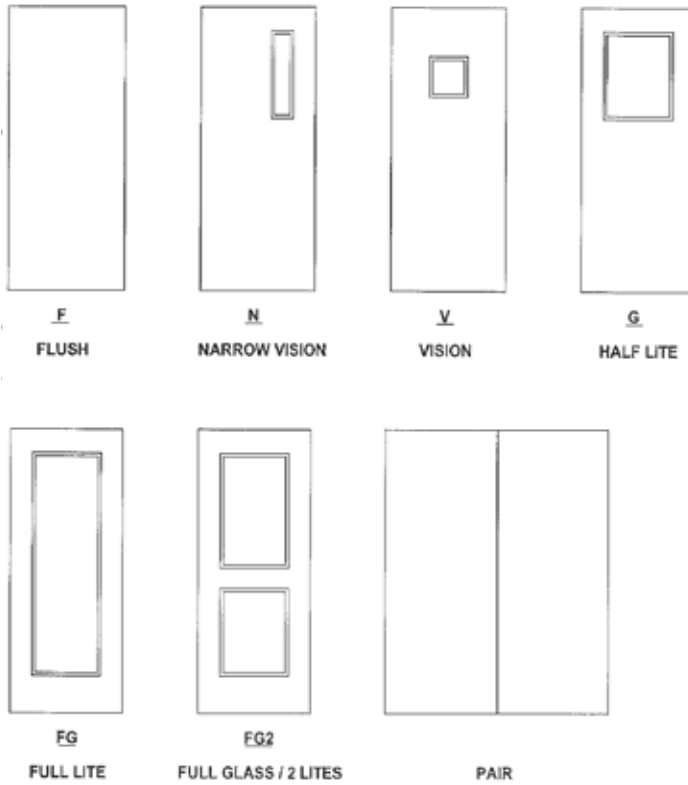
DeanSteel Manufacturing Company  
931 S. Flores Street  
San Antonio, TX 78204

P 800.825.8271  
F 210.226.0913  
[www.DeanSteel.com](http://www.DeanSteel.com)

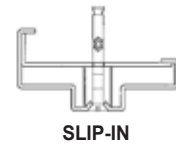


MADE IN AMERICA  
AND VETERAN OWNED

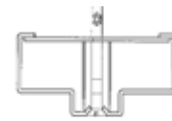
## Door Types



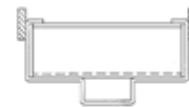
## Frame Types



SLIP-IN



"D"



WELDED-IN



"F"