

DSLB-5

Blast Resistant

SPECIFICATIONS

Frame	10 GA. Cold-rolled steel
Door	12 GA. Cold-rolled steel; 2-7/32 inches thick ASTM A1008 / A1008M
Blast Resistance	From 15 psi and very long durations, up to 35 psi with a duration of 10 milliseconds or less
Paint	Prime Painted
Hinges	Stainless Steel Continuous Pin & Barrel with SS Bearings
Lock	Dependent on blast requirements Single or 3-point Mortise Lock

OPTIONS*

Door Types	F, V and Pairs
Stainless Steel	Type 316L or Type 304 ASTM A240 / A240M
Galvanized Steel	ASTM A653 / A653M – A60
Vision Panel	DSM Proprietary
Fire Rated	Up to 3 hours for Flush Doors
Ballistic Resistant**	Up to Level 3 (UL 752)
Customizations	Size, Hardware and Features

* Some options are mutually exclusive

** Special door construction

INDEPENDENT VERIFICATION AND QUALIFICATION TESTING

Architectural Testing, Inc.

Baker Engineering and Risk Consultants, Inc.



DeanSteel Manufacturing Company
931 S. Flores Street
San Antonio, TX 78204

P 800.825.8271
F 210.226.0913
www.DeanSteel.com



MADE IN AMERICA
AND VETERAN OWNED

Door Types



F
FLUSH

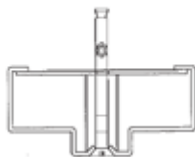


V
VISION



PAIR

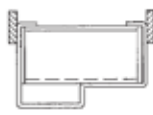
Frame Types



"D"



WELDED-IN
"D"



WELDED-IN
"F"



FLANGED SINGLE
RABBET / SLIP-IN