

Safer Room Unit

Storm Resistant
Intrusion Resistant

SPECIFICATIONS

Frame	14 GA. Cold-rolled steel; 5 ¾" Jamb Depth; KD
Door	14 GA. Cold-rolled steel; 1-13/16" thick
	16 GA. Perimeter Channels
	12 GA. Top and Bottom Flush Caps
Bullet Resistant	Level 1 – UL 752 tested
Fire Rated	Up to 3 Hours
Paint	Prime Painted
Hinge Prep	(3) 4 ½" Standard Weight Butt Hinges
Lock Prep	(1) Cylindrical (161) Lock
	(3) Deadbolts
	(2) 1/8" Bore x 2 ¾" Back Set)
Strike Prep	(1) ASA 4 7/8" strike and (3) 2 ¾" Deadbolt Strikes
Anchors	Twist in Stud or Wire Masonry Anchors

OPTIONS*

Door Types	F, N, V and G
Stainless Steel	Type 316L or Type 304
	ASTM A240 / A240M
Galvanized Steel	ASTM A653 / A653M – A60
Bullet Resistant	Up to Level 8
Vision Panel	DSM Proprietary
Anchors	Punch and Dimple with loose anchors
Stock	2868, 3068 and 3070
Configurations	Assembled with or without Hardware
	Welded Frame
Customizations	Size, Hardware and Features

* Some options are mutually exclusive

INDEPENDENT VERIFICATION AND QUALIFICATION TESTING

Southwest Research Institute
UL 752

UL / Intertek-Warnock Hersey
3 Hour Fire Resistant

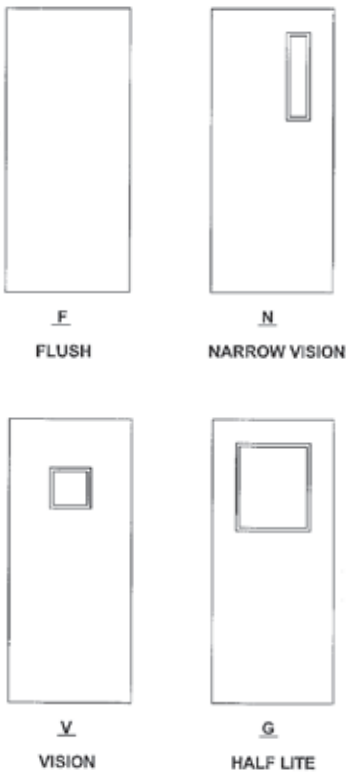
DeanSteel Manufacturing Company
931 S. Flores Street
San Antonio, TX 78204

P 800.825.8271
F 210.226.0913
www.DeanSteel.com



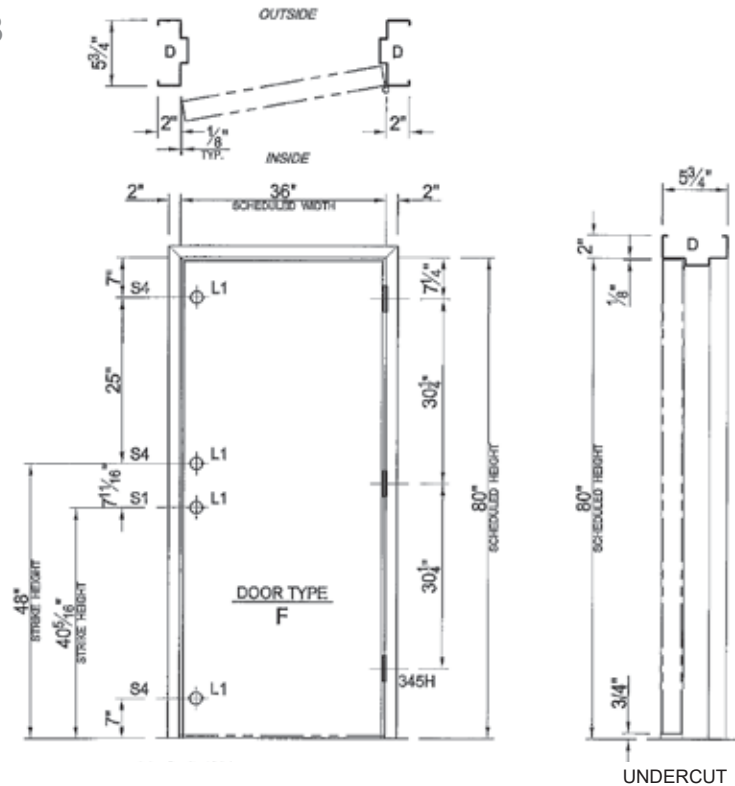
MADE IN AMERICA
AND VETERAN OWNED

Door Types

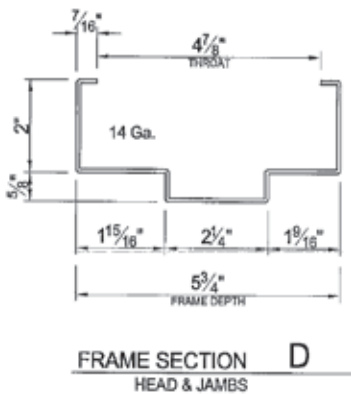


Door and Frame Dimensions

3068

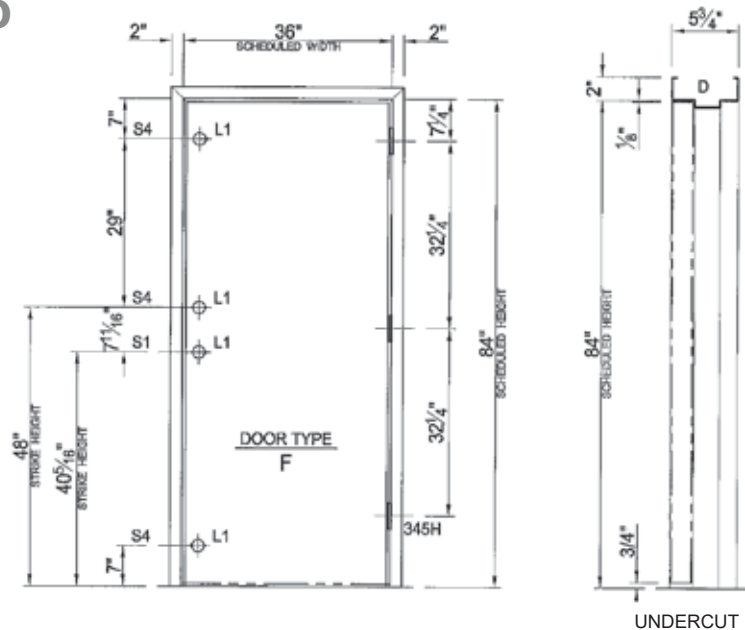


Frame Type



14 Ga. DOOR & FRAME

3070



- L1 - Gov't 161 (2 3/4" Backset x 2 1/8" Bore and a 1 1/8" x 2 1/4" Latch Face)
- S1 - ASA 4 7/8" Strike (1 1/4" x 4 7/8" ANSI 115.1)
- S4 - Strike (1 1/8" x 2 3/4" ANSI 115.3 No Lip)